

## 6-Well Hot Drop-Ins

- Overall dimensions: 81¼" x 26" (206.4 x 66 cm)
- NEW: add "HD" to item number for marine-grade well



1000W STANDARD DRAIN	MANIFOLD DRAIN	MANIFOLD WITH AUTOFILL	VOLTAGE	AMPS	PLUG	CONTROL
3640901	3640951	3640961	208-240	21.6-25	6-50P	Infinite
3640911	3640971	3640981	208-240	21.6-25	6-50P	Thermostatic

Note: HD wells have 2-year warranty

Note: Modular Drop-Ins cannot be canceled or returned

625W STANDARD DRAIN	MANIFOLD DRAIN	MANIFOLD WITH AUTOFILL	VOLTAGE	AMPS	PLUG	CONTROL
36409	3640950	3640960	208	18.0	6-30P	Infinite
3640910	3640970	3640980	208	18.0	6-30P	Thermostatic
36476	3647650	3647660	240	15.6	6-20P	Infinite
3647610	3647670	3647680	240	15.6	6-20P	Thermostatic

## NON-REFRIGERATED DROP-INS



For cold pan and frost-top-compatible breath guards  
Go to [VOLLRATH.com](http://VOLLRATH.com)

### Non-Refrigerated Short Side Cold Pans

- 18-8 stainless steel construction
- 8" (20.3 cm) deep well
- Thick polyurethane foam insulation
- Full-perimeter drip edge contains spills and condensation
- 1" (2.5 cm) integrated drain standard
- Narrow space-saving design
- Sized for standard steam table pan sizes
- Drain plug included

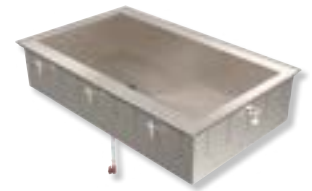


ITEM #	PANS	OVERALL DIMENSIONS IN (CM)	CASE LOT
36654	Two	45 <sup>7</sup> / <sub>8</sub> x 18 (115.4 x 45.79)	1
36657	Three	66 <sup>7</sup> / <sub>8</sub> x 18 (170 x 45.79)	1
36660	Four	88 <sup>7</sup> / <sub>8</sub> x 18 (224.2 x 45.79)	1

\* With 7/8" (2.2 cm) corner radius Note: Modular Drop-Ins cannot be canceled or returned

### Non-Refrigerated Cold Pans

- 18-8 stainless steel construction
- 8" (20.3 cm) deep well
- Thick polyurethane foam insulation
- Full-perimeter drip edge contains spills and condensation
- 1" (2.5 cm) integrated drain standard
- Drain plug included



ITEM #	DESCRIPTION	OVERALL DIMENSIONS IN (CM)	INTERIOR LENGTH IN (CM)
36491	1-pan	15 x 26 (38.1 x 66)	12 (30.5)
36450	2-pan	29 x 26 (73.7 x 66)	24 <sup>3</sup> / <sub>4</sub> (62.9)
36451	3-pan	41 <sup>1</sup> / <sub>2</sub> x 26 (105.4 x 66)	37 <sup>1</sup> / <sub>2</sub> (95.3)
36452	4-pan	54 <sup>3</sup> / <sub>4</sub> x 26 (139.1 x 66)	50 <sup>1</sup> / <sub>4</sub> (127.6)
36453	5-pan	68 x 26 (172.7 x 66)	63 (160)
36454	6-pan	81 <sup>1</sup> / <sub>4</sub> x 26 (206.4 x 66)	75 <sup>3</sup> / <sub>4</sub> (192.4)

\* With 7/8" (2.2 cm) corner radius Note: Modular Drop-Ins cannot be canceled or returned